

Goat anti-rhCC10, IgG

Description

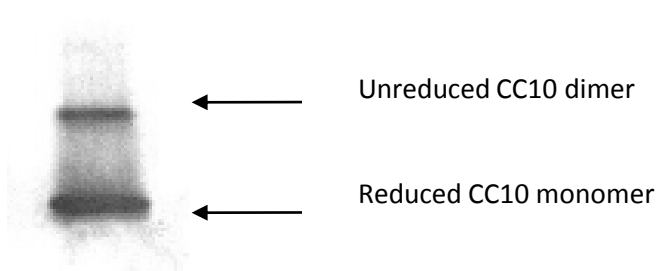
Goat polyclonal anti-human CC10 antibody, IgG

Specifications

Purification	Protein A
Antigen	Recombinant human CC10 protein ("rhCC10") homodimer
Quantity	100 micrograms
Formulation	1mg/ml in PBS
Recommended dilution	1:2000– 1:2500
Cross reactivity	Human CC10, Chimpanzee CC10 Does not recognize mouse, rat, porcine, rabbit or sheep CC10 at the recommended dilution.
Applications	ELISA, Western blot, Immunohistochemistry

Storage

Storage Store at -20 or -80 °C until use; Avoid multiple freeze-thaw cycles.



Detection of non-reduced purified human CC10 dimer and reduced CC10 monomer by Western blot using goat anti-human CC10 antibody at 1:2500 dilution.